

PART OF S.E. 1/4 SEC. 16, T.5N., R.1W., S.1E. & M.

# IRONWOOD SUBDIVISION A PLANNED UNIT DEVELOPMENT

## PHASE 4

### IN SOUTH OGDEN CITY

SCALE 1"=30'

TAXING UNIT: 27

PREFIX-07-277

SEE PAGE 252

S. 89°15'26" E. R=102.89  
L=11.20'  
N. 89°37'11" E.

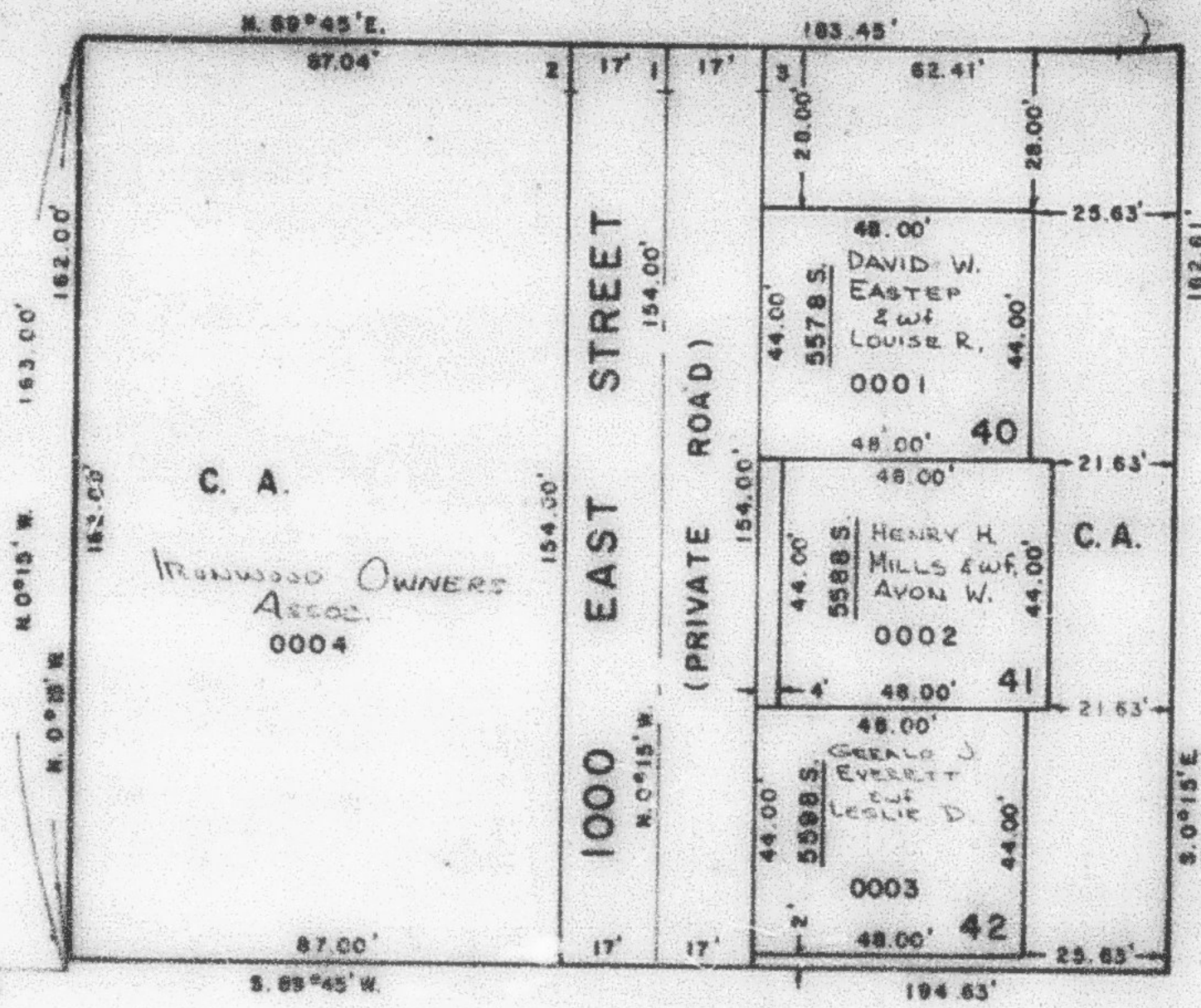
SEE PAGE 153

SEE PAGE 242

SEE PAGE 47

SEE PAGE 47

1219.99'  
2.09°26'45" E.  
SO. 1/4 COR. SEC. 16



#### CURVE DATA

	1	2	3
A =	0°27'19"	0°26'52"	0°27'07"
R =	1006.72'	1023.72'	989.72'
L =	8.00'	8.00'	8.00'
LC =	8.00'	8.00'	8.00'
	N0°01'13"W	N0°01'28"W	N0°01'28"W

FOR COMPLETE ENG. DATA  
SEE ORIG. DEED. PLAT IN  
BOOK 24, PAGE 83